

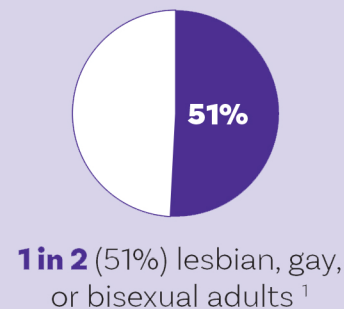
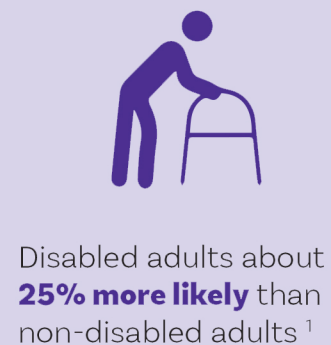
People impacted by family violence and sexual violence in Aotearoa

Family violence and sexual violence are significant problems happening across Aotearoa New Zealand and disproportionately affects some population groups and communities

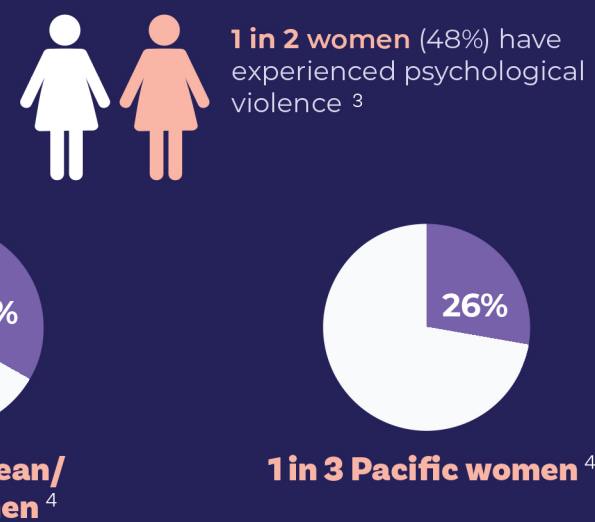
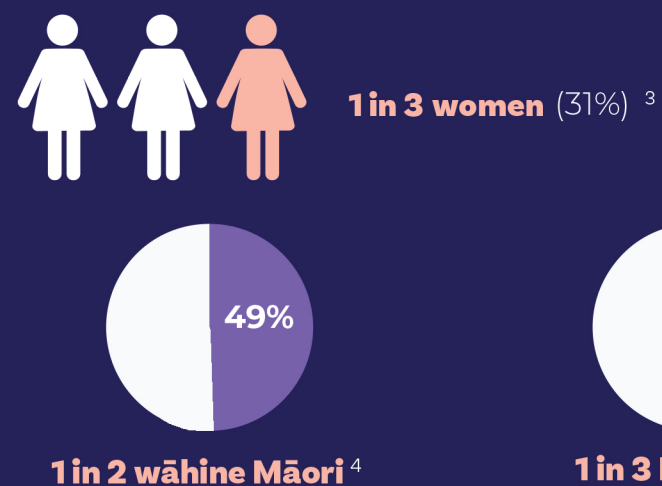
Sexual violence



Starts at a young age - **1 in 5 (18%) 15-19 year olds** affected so far in their lives¹



Intimate partner violence



Lesbian, gay or bisexual adults are **over 3 times more likely** to have experienced violence from a partner than heterosexual adults in the past year⁵



Disabled adults **52% more likely** to have experienced violence from a partner than non-disabled adults⁵



Sexual assault in their lifetime

Children and young people can be impacted for life

Experienced child sexual abuse



18% women born between 1991-2001,



down from 30% born in the 1950's⁶



1 in 10 (10%) aged 12 to 18 have been physically hurt by an adult in their home in the past year

Higher for



18% disabled young people



14% rainbow young people



14% rangatahi Māori⁷



69,500 reports of concern to Oranga Tamariki leading to **37,800 investigations** during the 12 months to 31 March 2023⁸



7% of all children **have a family violence notification** to government⁹



66% of young people who have committed a violent offence **have a police family violence notification**¹⁰

Many homicides are family violence

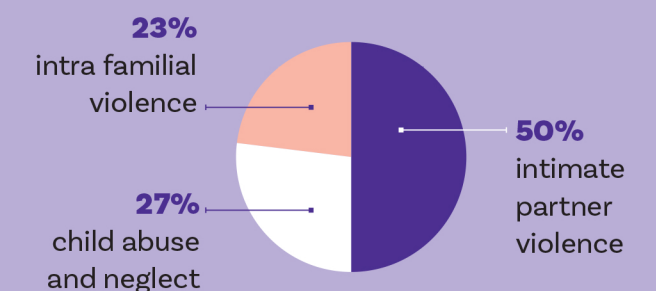


27%

Over a quarter (27%) of all homicides in 2021 were committed by family members¹¹

About **74%** of victims killed by their partner were women.¹¹

292 people died as a result of family violence between 2009 and 2019¹²



44% of the victims were **Māori**



Half (51%) of all women who died from intimate partner violence between 2009 and 2018 were in the **process of separating from their violent partner**¹³

The family violence and sexual violence system

Family violence and sexual violence have significant social, health and economic costs

A huge economic cost to Aotearoa

\$ The economic cost of family violence was estimated at up to **\$7 billion** per year in 2014, including up to **\$1.8 billion** in direct costs to the government ¹⁴

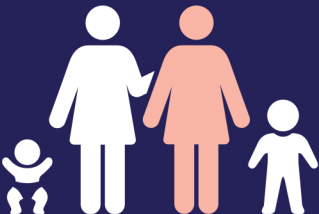


\$ The economic cost of sexual violence was estimated to cost **\$6.9 billion** per year in 2020, including **\$600 million** in costs to the government ¹⁵

Family violence estimated to cost to employers at least **\$368 million per year** ¹⁶

Communities

Most women (65%) seek help from family, friends or another person that they know ¹⁷



FROM FORMAL SOURCES

23%
counsellors and health workers

14%
justice system

7%
NGO's (e.g., Women's Refuge) ¹⁷

Education

Children of parents who experienced violence in both childhood and adulthood were **4 times more likely to be truant or suspended from school** ¹⁸

9x

Young people in alternative education are **nine times** more likely than the rest of the population to have been in the care of Oranga Tamariki ¹⁹

Health

Young people who have experienced family violence

3x
increase in attempted suicide rate

2-3x
increase in rates of depression ²⁰

Experiencing IPV:

affected physical health



27%
woman



13%
men

affected mental health



61%
woman



40%
men ¹⁸

Police



Police attend a **family violence event every 3 minutes** on average ²¹

Police response required 2016-2022

Family harm calls increased from **119,000** to **174,000**

Sexual assaults reported increased from around **5,600** to around **7,000** ²²



For every 100 **sexual violence victimisations** reported to police

42 LEAD TO CHARGES

12 LEAD TO CONVICTION

7 LEAD TO IMPRISONMENT

35 ARE NOT PROGRESSED²³

Only 8%
of sexual assaults are reported¹

Courts



In 2022-23, **5,719 applications for protection orders**



82%
were made by women

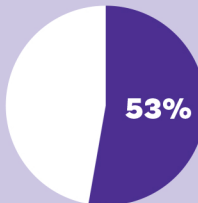


83%
were made against men ²⁴

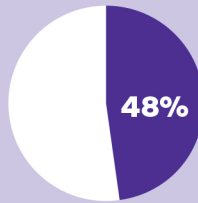


Family violence offences make up around **15% of all offences** brought before the court and **over half of all violent offences** ²⁵

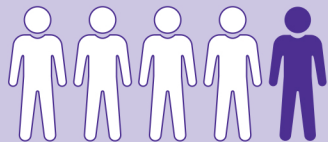
People in prison



Over half (53%) have been the victim of family violence in their lifetime ²⁶



48% experienced family violence as children ²⁶



At least **1 in 5 (22%)** have a sexual assault conviction ²⁷

Data included in this infographic provides high-level insights only



Te Kāwanatanga o Aotearoa
New Zealand Government